

Product Verification

Sustainability

according to LEED Building Design and Construction V4 (2015)

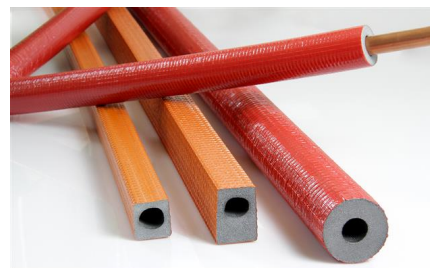
Product Systems

CLIMAFLEX® STABIL & EXZENTROFLEX® COMPACT

NMC S.A.

CLIMAFLEX® STABIL: pipe insulation with a robust protective coating, likewise on the basis of NMC Naturefoam® polyethylene which contains at least 50 % of renewable raw materials; wall thicknesses 4, 9, 13, 20 & 25 mm, Euroclass E

EXZENTROFLEX® COMPACT: excentric insulation with a robust protective coating for the lowest installation height and even tighter pipe laying; insulating thicknesses 9, 25, 38 & 46 mm, Euroclass E



Product Assessment

Materials and Resources

Criteria

Product Verification

MR Credit Life-Cycle Impact Reduction - Option 4: Whole-Building Life-Cycle Assessment	EPD available: Yes
MR Credit BPDO - Environmental Product Declaration - Option 1: Environmental Product Declaration	100 % weighted value
MR Credit BPDO - Environmental Product Declaration - Option 2: Multi-Attribute Optimization	0 % weighted value

MR Credit BPDO - Sourcing of Raw Materials - Option 1: Raw Material Source and Extraction Reporting	0 % weighted value
MR Credit BPDO - Sourcing of Raw Materials - Option 2: Leadership Extraction Practices	12.4 % weighted value
MR Credit BPDO - Material Ingredients - Option 1: Material Ingredient Reporting	0 % weighted value
MR Credit BPDO - Material Ingredients - Option 2: Material Ingredient Optimization	100 % weighted value
MR Credit BPDO - Material Ingredients - Option 3: Product Manufacturer Supply Chain Optimization	0 % weighted value
Location Valuation Factor	No

Indoor Environmental Quality

Criteria

Product Verification

EQ Credit Low-Emitting Materials (except Healthcare and Schools)	Yes
------------------------------------------------------------------	-----

Legend: yes = Product contributes toward satisfying the credit, N/A = Product not relevant in the credit, no = Credit requirements are not proven

■ Summary

The product contributes to the certification:

- The product has an Environmental Product Declaration (EPD), which can be used to calculate the building life cycle assessment under LEED MR Building Life-Cycle Impact Reductions - Option 4: Whole-Building Life-Cycle Assessment: EPD available: Yes
- Weighted Product Value on Credit BPDO - Environmental Product Declaration - Option 1: Environmental Product Declaration: 100 % weighted value
- Weighted Product Value on Credit BPDO - Environmental Product Declaration - Option 2: Multi-Attribute Optimization: 0 % weighted value
- Weighted Product Value on Credit BPDO - Sourcing of Raw Materials - Option 1: Raw Material Source and Extraction Reporting: 0 % weighted value
- Weighted Product Value on Credit BPDO - Sourcing of Raw Materials - Option 2: Leadership Extraction Practices: 12.4 % weighted value
- Weighted Product Value on Credit BPDO - Material Ingredients - Option 1: Material Ingredient Reporting: 0 % weighted value
- Weighted Product Value on Credit BPDO - Material Ingredients - Option 2: Material Ingredient Optimization: 100 % weighted value
- Weighted Product Value on Credit BPDO - Material Ingredients - Option 3: Supply Chain Optimization: 0 % weighted value

- Information for Location Valuation Factor is available: No
- The entire product contributes toward satisfying EQ Credit: Low-Emitting Materials: Yes

■ Ecolabels & Product-Assessments

EPD Eco Platform

EPD Institut Bauen und Umwelt e.V.



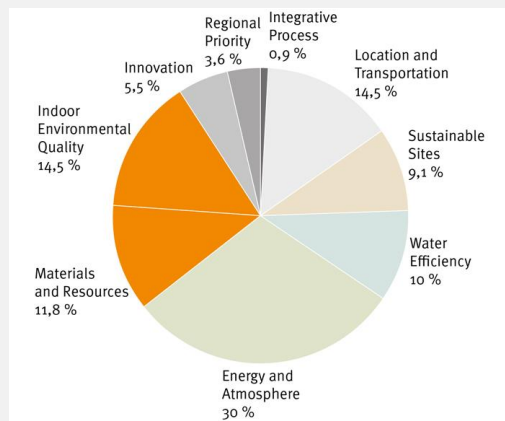
■ Green Building Certification System

This verification is the evaluation and ranking of products in terms of the certification system LEED version 4 (Building Design and Construction). The USGBC (U.S. Green Building Council) generally does not certify products. Therefore the project team or the manufacturer is responsible to declare compliance with respect to the LEED criteria. Notice: This verification is generated by the Assessment Service of BMS. The distribution or publication by third parties is not permitted. The data sheet is not a LEED certification document. The information is based on the manufacturer's specifications. Despite a diligent treatment of all information BMS can not make any warranties about the completeness, reliability and accuracy of this information. The requirements of LEED can be interpreted differently and depend on the project and scope of application. Therefore, BMS cannot accept any liability for the evaluation in terms of the LEED criteria. The user of the data sheet, the user / purchaser of the product and the consultant / planner, who is advising on this product has the duty to check the product for the intended application at their own responsibility. When a new version of this product verification is produced, the previous version loses its validity.

Source: www.usgbc.org

■ Certification System and Categories

Category Weighting



Category

Category considered in product verification

Integrative Process (IP)	No
Location and Transportation (LT)	No
Sustainable Sites (SS)	No
Water Efficiency (WE)	No
Energy and Atmosphere (EA)	No
Materials and Ressources (MR)	Yes
Indoor Environmental Quality (EQ)	Yes
Innovation (IN)	No
Regional Priority (RP)	No

Source: LEED v4 - New Construction

Detailed Verification

according to LEED Building Design and Construction V4 (2015)

Materials and Resources

MR Credit Life-Cycle Impact Reduction – Option 4: Whole-Building Life-Cycle Assessment

The product has an Environmental Product Declaration (EPD), which can be used to calculate the building life cycle assessment under LEED MR Building Life-Cycle Impact Reductions - Option 4: Whole-Building Life-Cycle Assessment:

CLIMAFLEX® STABIL & EXZENTROFLEX® COMPACT	EPD available: Yes
-------------------------------------------	--------------------

An environmental product declaration exists for the product:

CLIMAFLEX® STABIL & EXZENTROFLEX® COMPACT	Yes
-------------------------------------------	-----

EPD Owner of the Declaration:

CLIMAFLEX® STABIL & EXZENTROFLEX® COMPACT	NMC S.A.
-------------------------------------------	----------

EPD Publisher:

CLIMAFLEX® STABIL & EXZENTROFLEX® COMPACT	Institut Bauen und Umwelt e.V. (IBU)
-------------------------------------------	--------------------------------------

EPD Programme holder:

CLIMAFLEX® STABIL & EXZENTROFLEX® COMPACT	Institut Bauen und Umwelt e.V. (IBU)
-------------------------------------------	--------------------------------------

EPD Declaration number:

CLIMAFLEX® STABIL & EXZENTROFLEX® COMPACT	EPD-NMC-20170102-IBD1-EN
-------------------------------------------	--------------------------

EPD Issue date:

CLIMAFLEX® STABIL & EXZENTROFLEX® COMPACT	07.09.2017
-------------------------------------------	------------

EPD valid to:

CLIMAFLEX® STABIL & EXZENTROFLEX® COMPACT	06.09.2022
-------------------------------------------	------------

MR Credit BPDO – Environmental Product Declaration – Option 1: Environmental Product Declaration

Weighted Product Value on Credit BPDO - Environmental Product Declaration - Option 1: Environmental Product Declaration:

CLIMAFLEX® STABIL & EXZENTROFLEX® COMPACT	100 % weighted value
-------------------------------------------	----------------------

An environmental product declaration exists for the product:

CLIMAFLEX® STABIL & EXZENTROFLEX® COMPACT	Yes
-------------------------------------------	-----



EPD Type:

CLIMAFLEX® STABIL & EXZENTROFLEX® COMPACT	product_specific
-------------------------------------------	------------------

MR Credit BPDO – Environmental Product Declaration – Option 2: Multi-Attribute Optimization

Weighted Product Value on Credit BPDO - Environmental Product Declaration - Option 2: Multi-Attribute Optimization:

CLIMAFLEX® STABIL & EXZENTROFLEX® COMPACT	0 % weighted value
-------------------------------------------	--------------------

An environmental product declaration exists for the product:

CLIMAFLEX® STABIL & EXZENTROFLEX® COMPACT	Yes
-------------------------------------------	-----

Third party certified products that demonstrate impact reduction below industry average in at least three of the LCA-Categories GWP, ODP, AP, EP, POCP and ADPF:

CLIMAFLEX® STABIL & EXZENTROFLEX® COMPACT	No
-------------------------------------------	----

MR Credit BPDO – Sourcing of Raw Materials – Option 1: Raw Material Source and Extraction Reporting

Weighted Product Value on Credit BPDO - Sourcing of Raw Materials - Option 1: Raw Material Source and Extraction Reporting:

CLIMAFLEX® STABIL & EXZENTROFLEX® COMPACT	0 % weighted value
-------------------------------------------	--------------------

There is a corporate sustainability reports (CSR) report from the manufacturer:

CLIMAFLEX® STABIL & EXZENTROFLEX® COMPACT	No
-------------------------------------------	----

MR Credit BPDO – Sourcing of Raw Materials – Option 2: Leadership Extraction Practices

Weighted Product Value on Credit BPDO - Sourcing of Raw Materials - Option 2: Leadership Extraction Practices:

CLIMAFLEX® STABIL & EXZENTROFLEX® COMPACT	12.4 % weighted value
-------------------------------------------	-----------------------

Wood products

Content of FSC-certified wood-based materials in the entire product:

CLIMAFLEX® STABIL & EXZENTROFLEX® COMPACT	0 %
-------------------------------------------	-----

Recycled content

Creditable recycled content according to LEED for the entire product:

CLIMAFLEX® STABIL & EXZENTROFLEX® COMPACT	12.4 %
-------------------------------------------	--------

Postconsumer recycled content for the entire product:

CLIMAFLEX® STABIL & EXZENTROFLEX® COMPACT	0 %
-------------------------------------------	-----

Do you want to enter the recycled content for the entire product? Otherwise it will be automatically calculated from the components. If you do not have components for your product, we recommend that you enter the recycling percentage for the entire product here:

CLIMAFLEX® STABIL & EXZENTROFLEX® COMPACT	Yes
-------------------------------------------	-----



Postconsumer recycled content of product (creditable):

CLIMAFLEX® STABIL & EXZENTROFLEX® COMPACT	0 %
-------------------------------------------	-----

Postconsumer recycled content of the product:

CLIMAFLEX® STABIL & EXZENTROFLEX® COMPACT	0 %
-------------------------------------------	-----

Postconsumer recycled content for steel according to LEED:

CLIMAFLEX® STABIL & EXZENTROFLEX® COMPACT	0 %
-------------------------------------------	-----

The product is made of steel:

CLIMAFLEX® STABIL & EXZENTROFLEX® COMPACT	No
-------------------------------------------	----

Preconsumer recycled content of the product:

CLIMAFLEX® STABIL & EXZENTROFLEX® COMPACT	24.8 %
-------------------------------------------	--------

Preconsumer recycled content for the entire product:

CLIMAFLEX® STABIL & EXZENTROFLEX® COMPACT	24.8 %
-------------------------------------------	--------

MR Credit BPDO – Material Ingredients – Option 1: Material Ingredient Reporting

Weighted Product Value on Credit BPDO - Material Ingredients - Option 1: Material Ingredient Reporting:

CLIMAFLEX® STABIL & EXZENTROFLEX® COMPACT	0 % weighted value
-------------------------------------------	--------------------

A manufacturer inventory with all ingredients (to at least 0.1 %) identified by CASRN exists for the product:

CLIMAFLEX® STABIL & EXZENTROFLEX® COMPACT	No
-------------------------------------------	----

A Health Product Declaration (HPD) exists for the product:

CLIMAFLEX® STABIL & EXZENTROFLEX® COMPACT	No
-------------------------------------------	----

Certified according Declare - all ingredients have been evaluated and disclosed down to 0,1 % = 1000 ppm:

CLIMAFLEX® STABIL & EXZENTROFLEX® COMPACT	No
-------------------------------------------	----

Certified according Product Lens:

CLIMAFLEX® STABIL & EXZENTROFLEX® COMPACT	No
-------------------------------------------	----

Certified according Cradle to Facts - NSF/ANSI 336: Sustainability Assessment for Commercial Furnishings Fabric:

CLIMAFLEX® STABIL & EXZENTROFLEX® COMPACT	No
-------------------------------------------	----

Assessed according ANSI/BIFMA e3 Furniture Sustainability standard - Product earned at least 3 points under 7.5.1.3 Advanced Level in e3-2014 or 3 points under 7.4.1.3 Advanced Level in e3-2012:

CLIMAFLEX® STABIL & EXZENTROFLEX® COMPACT	No
-------------------------------------------	----

Certified with Cradle to Cradle:

CLIMAFLEX® STABIL & EXZENTROFLEX® COMPACT	No
-------------------------------------------	----



Cradle to Cradle Standard Version:

CLIMAFLEX® STABIL & EXZENTROFLEX® COMPACT	noentry
-------------------------------------------	---------

Cradle to Cradle Level:

CLIMAFLEX® STABIL & EXZENTROFLEX® COMPACT	noentry
-------------------------------------------	---------

Certified with Cradle to Cradle Material Health:

CLIMAFLEX® STABIL & EXZENTROFLEX® COMPACT	No
-------------------------------------------	----

Cradle to Cradle Material Health Level:

CLIMAFLEX® STABIL & EXZENTROFLEX® COMPACT	noentry
-------------------------------------------	---------

For Cradle to Cradle Material Health are at least 90% of materials assessed by weight:

CLIMAFLEX® STABIL & EXZENTROFLEX® COMPACT	No
-------------------------------------------	----

MR Credit BPDO – Material Ingredients – Option 2: Material Ingredient Optimization

Weighted Product Value on Credit BPDO - Material Ingredients - Option 2: Material Ingredient Optimization:

CLIMAFLEX® STABIL & EXZENTROFLEX® COMPACT	100 % weighted value
-------------------------------------------	----------------------

SVHC according REACH < 0,01 % (100 ppm):

CLIMAFLEX® STABIL & EXZENTROFLEX® COMPACT	Yes
-------------------------------------------	-----

The Product have fully inventoried chemical ingredients to 100 ppm and no Benchmark 1 hazard according to GreenScreen v1.2 Benchmark. The product is assessed with "GreenScreen List Translator":

CLIMAFLEX® STABIL & EXZENTROFLEX® COMPACT	No
-------------------------------------------	----

The Product have fully inventoried chemical ingredients to 100 ppm and no Benchmark 1 hazard according to GreenScreen v1.2 Benchmark. The product is assessed with "GreenScreen Assessment":

CLIMAFLEX® STABIL & EXZENTROFLEX® COMPACT	No
-------------------------------------------	----

Certified with Cradle to Cradle:

CLIMAFLEX® STABIL & EXZENTROFLEX® COMPACT	No
-------------------------------------------	----

Cradle to Cradle Standard Version:

CLIMAFLEX® STABIL & EXZENTROFLEX® COMPACT	noentry
-------------------------------------------	---------

Cradle to Cradle Level:

CLIMAFLEX® STABIL & EXZENTROFLEX® COMPACT	noentry
-------------------------------------------	---------

MR Credit BPDO – Material Ingredients – Option 3: Product Manufacturer Supply Chain Optimization

Weighted Product Value on Credit BPDO - Material Ingredients - Option 3: Supply Chain Optimization:

CLIMAFLEX® STABIL & EXZENTROFLEX® COMPACT	0 % weighted value
-------------------------------------------	--------------------



Manufacturer is certified according ISO 14001 - Environmental Management System:

CLIMAFLEX® STABIL & EXZENTROFLEX® COMPACT	No
-------------------------------------------	----

Manufacturer is certified according OHSAS 18000 - Health and Safety Management System:

CLIMAFLEX® STABIL & EXZENTROFLEX® COMPACT	No
-------------------------------------------	----

Location Valuation Factor

Information for Location Valuation Factor is available:

CLIMAFLEX® STABIL & EXZENTROFLEX® COMPACT	No
-------------------------------------------	----

Place of raw material extraction (e.g D-70563 Stuttgart):

CLIMAFLEX® STABIL & EXZENTROFLEX® COMPACT	BRA (Brasilien)
-------------------------------------------	-----------------

Place of manufacture (e.g. D-70563 Stuttgart):

CLIMAFLEX® STABIL & EXZENTROFLEX® COMPACT	B-4731 Eynatten
-------------------------------------------	-----------------

Place of purchase incl. distribution (e.g. D-70563 Stuttgart):

CLIMAFLEX® STABIL & EXZENTROFLEX® COMPACT	D-64646 Heppenheim
-------------------------------------------	--------------------

The distance between place of raw material extraction and manufacture is less than 100 miles/160 km:

CLIMAFLEX® STABIL & EXZENTROFLEX® COMPACT	No
-------------------------------------------	----

Indoor Environmental Quality

EQ Credit Low-Emitting Materials (except Healthcare and Schools)

The entire product contributes toward satisfying EQ Credit: Low-Emitting Materials:

CLIMAFLEX® STABIL & EXZENTROFLEX® COMPACT	Yes
-------------------------------------------	-----

The product contributes toward satisfying EQ Credit 4: Low-Emitting Materials:

CLIMAFLEX® STABIL & EXZENTROFLEX® COMPACT	Yes
-------------------------------------------	-----

Ceilings, walls, thermal, and acoustic insulation

The entire product contributes toward satisfying EQ Credit 4: Low Emitting Materials, Category Ceilings, walls, thermal, and acoustic insulation:

CLIMAFLEX® STABIL & EXZENTROFLEX® COMPACT	Yes
-------------------------------------------	-----

The product contributes toward satisfying EQ Credit 4: Low Emitting Materials, Category Ceilings, walls, thermal, and acoustic insulation:

CLIMAFLEX® STABIL & EXZENTROFLEX® COMPACT	Yes
-------------------------------------------	-----

The product is a ceiling, wall, acoustic or thermal insulation material:

CLIMAFLEX® STABIL & EXZENTROFLEX® COMPACT	Yes
-------------------------------------------	-----



TVOC after 14 days:

CLIMAFLEX® STABIL & EXZENTROFLEX® COMPACT	< 0.1 mg/m ³
-------------------------------------------	-------------------------

Formaldehyde after 28 days:

CLIMAFLEX® STABIL & EXZENTROFLEX® COMPACT	< 0.003 mg/m ³
-------------------------------------------	---------------------------

Emission testing method according CDPH Standard Method v1.1-2010:

CLIMAFLEX® STABIL & EXZENTROFLEX® COMPACT	No
-------------------------------------------	----

Emission testing method according AgBB Testing and Evaluation Scheme (2010):

CLIMAFLEX® STABIL & EXZENTROFLEX® COMPACT	Yes
-------------------------------------------	-----

Emission testing method according ISO 16000-3: 2010, ISO 16000-6: 2011, ISO 16000-9: 2006, ISO 16000-11:2006 either in conjunction with AgBB, or with French legislation on VOC emission class labeling:

CLIMAFLEX® STABIL & EXZENTROFLEX® COMPACT	No
-------------------------------------------	----

Emission testing method according DIBt testing method (2010):

CLIMAFLEX® STABIL & EXZENTROFLEX® COMPACT	No
-------------------------------------------	----

■ Contact Details Manufacturer

NMC S.A.

Gert-Noël-Straße
4731 Eynatten
BE
www.nmc-insulation.com

Contact Person: Robert Christiaans



■ Disclaimer

This verification is the evaluation and ranking of products in terms of the certification system LEED version 4 (Building Design and Construction). The USGBC (U.S. Green Building Council) generally does not certify products. Therefore the project team or the manufacturer is responsible to declare compliance with respect to the LEED criteria. Notice: This verification is generated by the Assessment Service of BMS. The distribution or publication by third parties is not permitted. The data sheet is not a LEED certification document. The information is based on the manufacturer's specifications. Despite a diligent treatment of all information BMS can not make any warranties about the completeness, reliability and accuracy of this information. The requirements of LEED can be interpreted differently and depend on the project and scope of application. Therefore, BMS cannot accept any liability for the evaluation in terms of the LEED criteria. The user of the data sheet, the user / purchaser of the product and the consultant / planner, who is advising on this product has the duty to check the product for the intended application at their own responsibility. When a new version of this product verification is produced, the previous version loses its validity.