

AEROLINE[®]

PEX TERRA WP

THE NEW CONNECTION SYSTEM
FOR HEAT PUMPS



TECHNICAL
INSULATION

www.nmc-insulation.com

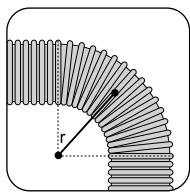
AEROLINE® PEX TERRA WP

The solution for perfect piping of air/water and brine/water heat pumps in the ground.

The new AEROLINE® TERRA WP offers an absolutely well thought-out, easy and quick to install system for heat pump pipework with smart detailed solutions.

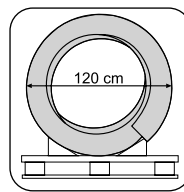
THE HIGHLIGHTS AT A GLANCE:

The buried heat pump pipework system with pre-insulated PE-Xa plastic pipes stands for maximum flexibility.



Bending radii

Narrowest bending radius 42.5 cm.



Transport

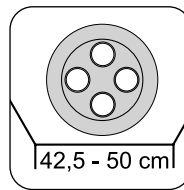
Smallest packing dimensions.

Complete system, easy and quick to install with little earthworks, integrated empty conduits and pull cord that make it easy to run the cables through.



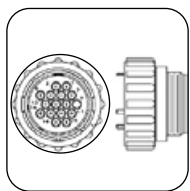
Energy saving

Optimized insulation geometry and lowest thermal conductivity reduce heat loss to a minimum.



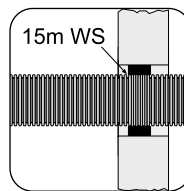
Insertion

Minimization of trench width.



Cable entry

Integration of manufacturer-specific control cables, sensor cables and electrical load cables.



Sealing

Optimal building tightness (15 m WS against water).

- Modular complete system
- Corrosion-proof service pipes made of cross-linked PE-Xa
- Oxygen diffusion barrier according to DIN 4726
- Optimized thermal insulation and thus better energy efficiency
- Double protection against water ingress due to double-walled pipe construction
- Manufacturer-specific plugs can also be routed through the pipe by means of the enclosed pull cord

TECHNICAL DATA

AEROLINE® PEX TERRA WP

Jacket pipe:

- Double-walled cable protection pipe made of PE-HD
- Ring stiffness according to DIN 16961, $SR24 \geq 16.0 \text{ kN/m}^2$
- Outer diameter: 160mm
- Minimum bending radius: 42.5cm

Carrier pipe:

- Material: PE-Xa
- Degree of cross-linking: $\geq 70\%$ (EN ISO 15875)
- Oxygen-tight according to DIN 4726
- Temperature range: up to $+90^\circ\text{C}$
- Maximum operating pressure: 6 bar
- Water content: 0.529 l/m
- Coefficient of linear expansion:
at 20°C : $1.4 \cdot 10^{-4} \text{ 1/k}$
at 100°C : $2.05 \cdot 10^{-4} \text{ 1/k}$

Electric installation pipe 32 (inner diameter 22 mm) (DIN EN 50086):

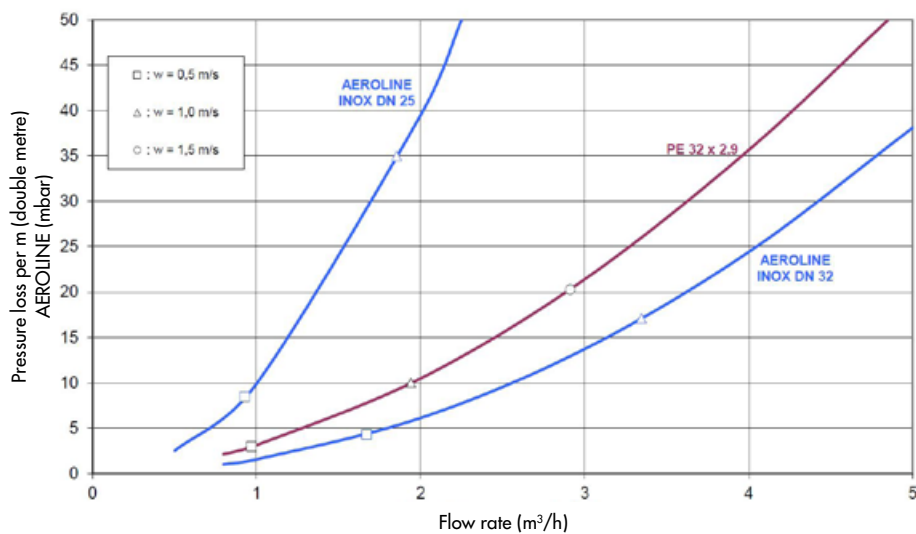
- For control, sensor or electrical load line

Insulation material made of EPDM:

- Light, flexible, closed-cell, synthetic rubber
- Fire behaviour: Euro class E (DIN EN 13501-1)
- Dimensions and tolerances in accordance with DIN EN 14304
- Thermal conductivity:
0.036 W/mK at 0°C
0.038 W/mK at 40°C

Pressure losses

The diagrams apply to 1 double metre of straight pipe and water at a temperature of 10°C .





AEROLINE[®] PEX TERRA WP

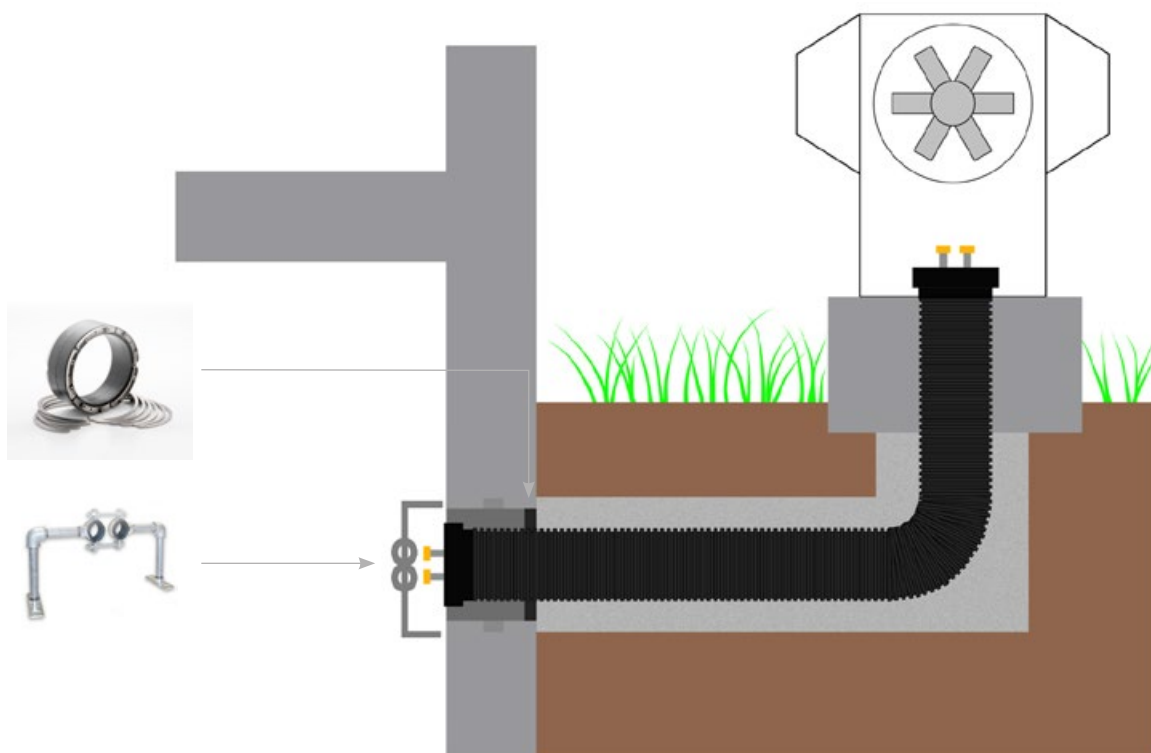
MATERIAL	<ul style="list-style-type: none"> ▪ Double-walled cable protection pipe made of PE-HD ▪ 2 PE-Xa plastic pipes (flow and return) ▪ Dam hose made of EPDM with black polyolefin protective film
MEDIUM PIPE	Cross-linked PE-Xa
PRODUCT DESCRIPTION	Heat pump piping system for externally installed air/water heat pumps or brine/water heat pumps; for supply in the ground
SCOPE OF APPLICATION	For externally installed air/water heat pumps
COLOUR	Black
THERMAL CONDUCTIVITY	(EN ISO 8497) 0,036 W/mK at 0°C 0,038 W/mK at 40°C
FIRE BEHAVIOUR	Euroclass E (EN 13501-1)
MAXIMUM OPERATING PRESSURE	6 bars

AEROLINE® PEX TERRA WP

Piping system for air/water and brine/water heat pumps installed outdoors

AEROLINE® PEX TERRA WP

Reference	Description	Packaging unit	item code
PEX 32 x 2,9	PEX 32, length 3 m	3 m	3046192
	PEX 32, length 5 m	5 m	3046194
	PEX 32, length 7,5 m	7,5 m	3046195
	PEX 32, length 10 m	10 m	3046196
	PEX 32, length 12 m	12 m	3046197
	PEX 32, length 14 m	14 m	3046199
	PEX 32, length 17,5 m	17,5 m	3046200
	PEX 32, length 20 m	20 m	3046202
	PEX 32, length 25 m	25 m	3046203



MASONRY SEALING SET

For air and watertight sealing of the casing pipe against the masonry. For insertion into suitable casing pipes or core drill holes. Tight against pressing water up to 1.5 bar.

Core drill hole/lining di: 200 mm.



BEND SUPPORT

The bend support makes it easier to create a fixed bend, e.g. under the plinth e.g. under the base or foundation of the outdoor unit.



FIXED POINT CLAMP

To accommodate the long expansion of the service pipes, it is advisable to fix them with our clamps. The flow and return can be fixed with the practical double clamp.



Masonry sealing set			
Reference	Description	Pckg. unit	item code
PEX 32x2,9	Sealing insert made out of stainless steel and EPDM rubber; 5 clip rings made of stainless steel	1 Set	3032582



Fitting with external thread			
Reference	Description	Pckg. unit	item code
PEX 32x2,9	PEX 32 x 1" AG	1 pc.	3046537



Fixed point clamp			
Reference	Description	Pckg. unit	item code
PEX 32x2,9	For fixing and absorbing the linear expansion of flow and return pipe	1 Set	3046320



Transition piece			
Reference	Description	Pckg. unit	item code
1"IG x 1¼"AG	For male and female thread	1 pc.	3032967
1¼"IG x 1½"AG		1 pc.	3032973



Bending support			
Reference	Description	Pckg. unit	item code
PEX 32x2,9	Strap to facilitate a fixed bend	1 pc.	3036424



Well foam			
Reference	Description	Pckg. unit	item code
750 ml	Well foam for foaming out the casing pipe	1 pc.	3036428



Route warning tape			
Reference	Description	Pckg. unit	item code
11 m	Red and yellow warning tape every 11 / 20 / 25 m	1 pc.	3036406
20 m		1 pc.	3036407
25 m		1 pc.	3036408

NMC sa

Gert-Noël-Strasse · B-4731 Eynatten
☎ +32 87 85 85 00 · 📠 +32 87 85 85 11
info@nmc.eu



www.nmc-insulation.com